



INSTALLATION INSTRUCTIONS  
FOR WICANDERS 2G FLOORS



# INSTALLATION INSTRUCTIONS FOR WICANDERS 2G FLOORS



## (Preparation)

### Subfloor requirements

Wicanders floating floors can be installed in most domestic areas and in almost all commercial areas except in bathrooms, saunas and persistently wet rooms.

Wicanders Floating floors can be laid on top of most hard surfaces such as resilient floor coverings, wood flooring and ceramic tiles. Soft subfloors such as carpets and similar must be removed.

The subfloor must be even, flat, dry and variations should not exceed 3mm in 2m (0.12" in 6.6 feet).

All type of concrete, wooden and ceramic surfaces must be completely dry.

Never install Wicanders floating floors without using a PE moisture barrier film with a minimum thickness of 0,2mm (0.08").

### Radiant-Heated Subfloors:

For Wicanders floating floors the temperature of the subfloor must not exceed 28°C (82°F). For detailed information, follow the instructions supplied by the subfloor heating system manufacturer/contractor, or contact your supplier.

Remember that rugs or mats placed on top of the floor may function as heat accumulators and will increase the floor surface temperature more than the maximum surface temperature recommended (must not exceed 20-22°C (68°F-72°F)).

Any Heated Subfloor has certain working conditions depending on the heating system and the subfloor.

In order to avoid problems with functioning and durability during the construction phase, the norms and rules concerning installation are to be followed very strictly. The drying of a heated subfloor has to be made by turning the heating on/off with a pause before installation of the floor, following a documented protocol. After that you can begin the "heating phase".

The beginning of the heating phase in concrete subfloors is to be made not before 21 days after complete curing of the substrate. The heating phase has to begin with running temperature of 25°C (78°F) during 3 days.

The subfloor should be in place and cured for at least 60-90 days.

The temperature should then be increased each day until the maximum temperature allowed according to the manufacturer system. This maximum value should be kept for at least 72 hours and maintained for 5-7 days without turning it off. The decrease of temperature is made by reducing it gradually every day until 18°C (65°F) on the surface is achieved. During the installation, the temperature of the surface should not exceed 18°C (65°F) and should be kept for 3 days after finishing the installation (for floating floors). Then the temperature should be increased slowly to a max. of 28°C (82°F) on the subfloor surface.

### Expansion Gaps

Wicanders floating floors are installed as a "floating floors", so the planks should not be fixed to the subfloor.

The skirting boards/mouldings cannot be pressed down, not restricting the movement of the floor. Also provide 5mm (0.2") expansion gaps to the walls and other fixed objects. Skirting boards/mouldings should cover minimum 7mm (0.28") of the floor.

Transitions between two rooms and asymmetrical floor areas require extra expansion gaps in floor areas superior to 100m<sup>2</sup> (1000 sqft) or with dimensions bigger than 10m (30 feet) in either direction.

## (Prior to installation)

### Transport, storage and acclimatization

Transport and store the cartons horizontally.

Packed tiles should be acclimatized at the job site in a dry, well-ventilated area for a minimum of 48 hours so that flooring may acclimate.

Remove tiles from packages just before starting the installation.

During storage and installation, maintain temperature and relative humidity to a level consistent with the conditions which will prevail when the building is occupied. In most cases, this means maintaining a temperature range from 18°C to 28°C (65°F to 82°F) and relative humidity range from 35% to 65%. In order to reach this climate, use heating or air conditioning in the appropriate duration of time before starting the installation.

Wicanders shade variation is an inherent and attractive characteristic. To achieve the most pleasant blend of shades, shuffle the planks before installation.

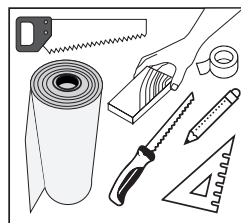
### Site inspection

Prior to installation, please inspect the tiles in daylight for any visible faults or damage, and also check if the subfloor and site conditions are in accordance with the specifications described within these instructions.

Amorim Revestimentos cannot be held responsible for claims associated with improper subfloors, improper applications, adhesives, varnishes and the use of maintenance products not recommended, or detectable defects verifiable prior to installation.

## (During installation)

### Tools required



Padsaw or a fine toothed handsaw, spacer blocks, pencil, set square, 0.2mm PE film and adhesive tape.

### Moisture Protection

Despite its age, there is always a risk of moisture in subfloors, for that reason it is necessary to ensure that an efficient moisture barrier is installed.

Subfloors must be permanently dry on concrete subfloors without radiant heat. Consider the maximum humidity less than 75% RH or conduct calcium chloride moisture tests to ensure that moisture emission levels are less than 3lbs/1000ft<sup>2</sup>/24 hours (USA and Canada), or CM Test:

Type of Subfloor	Moisture content CM% Heated	Non-heated
Concrete	1,5	2,0
Anhydrite	0,3	0,5

All types of concrete subfloors require insulation against moisture.

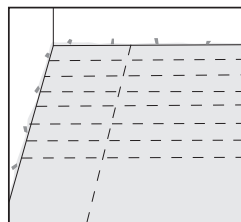
This includes types with built-in moisture barrier, ceramic, heated and covered with resilient floors.

Use a PE moisture barrier film with a minimum thickness of 0,2mm (0.08").

On ground and basement subfloors we recommend to lay 2 layers crossways for better moisture protection.

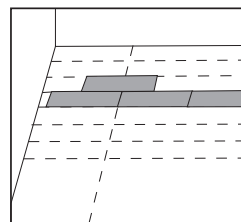
### Laying

On wooden floors, we recommend laying Wicanders floors crossways to the existing floorboard.



Lay the PE film, allowing at least 20cm (8") of overlap and use adhesive tape to unite. Turn the film upwards 5cm (2") along the walls.

Trim after the skirting boards/mouldings are fixed to the wall.



Measure the room accurately, at right angle to the direction of the planks. The planks in the final row should be at least 5cm (2") wide.

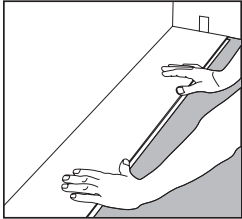
If necessary, the planks in the first row can be cut to a smaller size.

# INSTALLATION INSTRUCTIONS FOR WICANDERS 2G FLOORS



## (First Three Rows)

The planks can be installed from all directions. Wicanders 2G floors are easy to install. We recommend to start installation in the right-hand corner.



1

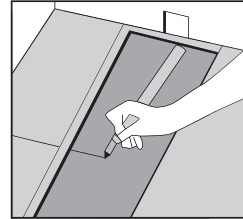
Turn the tongue side of the plank facing the wall. Maintain a gap of 5mm (0.2") on the short side.



2

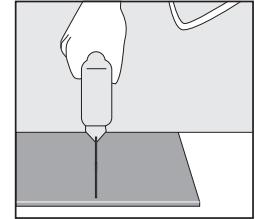
Hold the next plank against the first at an angle to the first one and lay it flat on the floor.

Complete the first row in the same way.



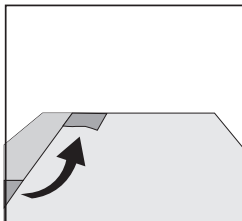
3

Cut the final plank of the first row to the correct length. Place the final plank face down and the short side without the locking strip towards the wall. The distance to the wall should be 5mm (0.2").



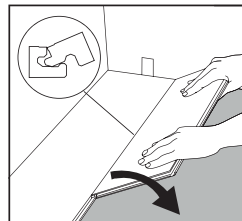
4

Mark where the plank is to be cut and place it on the work surface and cut to size using any kind of saw.



5

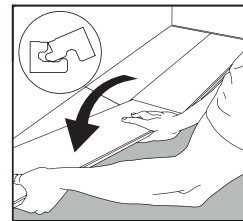
Make sure that the long sides of the planks make a straight line. Use the cut piece of the plank from the previous row to start the next one. However it must be at least 30cm (12") long. If the piece is too short, start with a new board and cut it in half. Always ensure that the end joints are staggered at least 30cm (12"). Tiles with 605 x 445 (23-7/8" x 17-1/2"), "brick" or "half brick" installation method must be used.



6

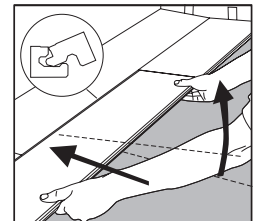
Place the first plank of the new row with the tongue side at an angle against the groove side of the plank in the previous row.

Press forward and lay it flat at the same time.



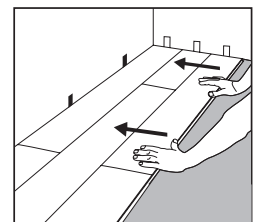
7

Place the short end of the plank at an angle against the previous installed plank and fold down. Ensure that the plank is positioned on the integral locking strip of the plank in the previous row.



8

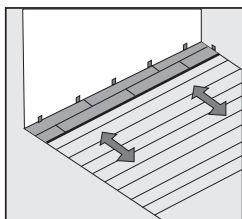
Lift the plank (together with the previous one laid in the same row) slightly up (about 30mm (1.2")), push it against the row in front and then put it down. Tip: This movement requires some gentle adjustments on the pressing angle.



9

Adjust the distance to the wall to 5mm (0.2") when three rows are complete.

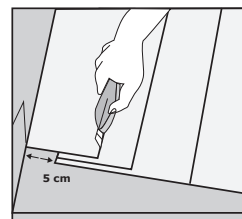
## (Next rows)



10

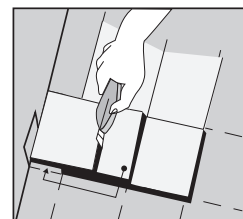
Proceed the installation as described above until reaching the opposite wall.

## (Last Row)



11

Measure and cut the planks in the last row to the correct size. Allow for a 5mm (0.2") distance to the wall. No plank should be less than 5cm (2") wide.



12

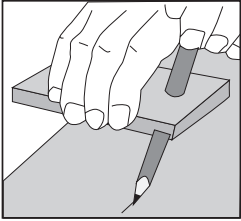
The last and first plank can be cut in the correct width. Place the last plank on top the second to last plank. Mark the plank with the help of a piece of plank without locking the strip. Allow for 5mm (0.2") distance to the wall for the expansion gap.

# INSTALLATION INSTRUCTIONS FOR WICANDERS 2G FLOORS

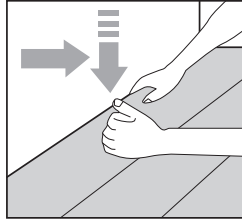


## *(Uneven walls)*

Sometimes the first row must be cut to match an uneven wall.



Transfer the shape of the wall to the planks. Do not forget to allow 5mm (0.2") for the expansion gap.

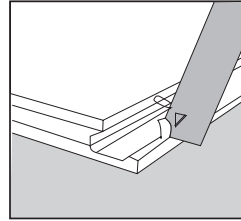


To remove the first row, lift the plank a few centimetres and tap along the joint.

Cut the planks as required.

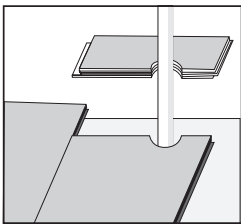
## *(Installation around doors, radiators and last row)*

If you cannot angle the tile under (e.g. a doorframe) or low fitted radiator, you can do as the picture shows:

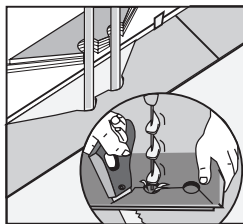


cut away the locking edge and apply Glue (PVA Glue, class D3) on the groove and install the plank

## *(Heating Pipes)*



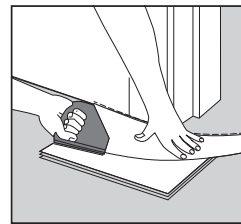
Drill the required holes in the planks, making a hole on the plank 10mm (0.4") bigger than the pipe diameter.



Cut the plank with a 45° angle towards the hole. The cut-off piece is glued in the position again.

Cover the hole with a pipe sleeve.

## *(Door Frames)*



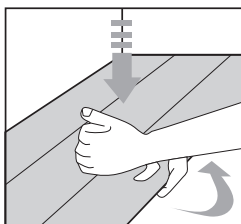
If a door frame needs to be cut, use a piece of plank to obtain the correct height.

Saw the door frame and architrave to the required height allowing for 2mm (0.08") of space to the planks.

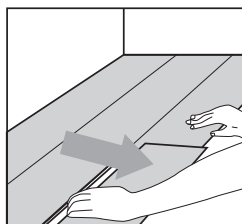
The planks can be laid from all directions. This makes easier to plan the installation e.g. around doors.

## *(After installation)*

### *Removing the floor*



If you wish to uninstall the floor, just lift the planks a few centimetres and tap along the joint.



The released plank can then be pulled out. Never bend connected plank backwards, as this will damage the planks.

# CARE & MAINTENANCE OF WICANDERS FLOORS



Wicanders® floors are easy to maintain. You only need a mild detergent and a vacuum cleaner. For daily/weekly maintenance, you can also use a broom handle with a cloth on the end. The removable cloth has a substance with anti-static characteristics, which will clean all the dust and prevent its settling on the floor. For care and maintenance, Wicanders® recommends a range of products which will give pleasant results.

Product	Function	Surface	Dilution	Drying Time	Coverage
<b>Spray Cleaner</b>	Mild detergent (spray)	<b>Cork Go, Essence, Resist+, Pure Stone Go, Essence, Resist+, Hydrocork Wood Go, Essence, Resist, Resist+, Hydrocork</b>	None	15 min.	100-200 ml / 100 m <sup>2</sup>
<b>Soft Cleaner</b>	Mild Detergent		50-100 ml in 10 litres of water	15 min.	50-100ml in/to 10L of water / 100m <sup>2</sup>
<b>Power Polish**</b>	Protecting		None	20-30 min.	3 litres/100 m <sup>2</sup>
<b>Power Strip*</b>	Removing Power Polish through cleaning		With water 1:10 to 1:20	5 min.	1 litres/100m <sup>2</sup>

\*Use only if the floor is very dirty and use it always diluted.

Sanded products can also be cleaned with the above mentioned products, after applying W 2000.

For a correct use, follow carefully the application instructions of the products on the packaging labels, as well as the information from technical data sheets.

If you prefer to use other maintenance products, which are not Wicanders, please use only the ones that Wicanders recommends (see table Auxiliary Product List).

## (Regular Cleaning: Wicanders Spray Cleaner)



Spray Cleaner should be used for regular cleaning of all Wicanders Floors. Before wiping the floor, vacuum, broom or sweep it to remove all loose dirt. This avoids dirt to penetrate on the embossing and joints of the floor.

### Spray Cleaner – Use and Coverage

**Product description:** Wicanders Spray Cleaner is a floor-cleaner to spray for quick and easy regular cleaning.

**Field of application:** For cleaning of Wicanders floors in commercial/home applications.

**Advantages:** Spray - clean - ready to use.

**Sizes:** 1 L

**Application:** Open spray-pistol by turning the jet and moisten the area to be cleaned in sections. Wipe the floor in loops using a mop. Exchange soiled mops-cloths or wash them under tap.

## (Regular Cleaning: Wicanders Soft Cleaner)



Soft Cleaner should be used for regular cleaning of all Wicanders floors. Before wiping the floor with a well-wrung mop, vacuum, broom or sweep it to remove all loose dirt. This avoids dirt to penetrate on the embossing and joints of the floor.

### Soft Cleaner – Use and Coverage

**Product description:** Wicanders Soft Cleaner is a mild detergent concentrate which has been developed for regular cleaning.

**Field of application:** For cleaning of all Wicanders® floors in commercial/home applications.

**Advantages:** - pH-neutral - concentrate - very effective cleaning performance.

**Sizes:** 1 L

**Application:** Add 50 - 100 ml of Soft Cleaner to a bucket of water (10litres-2.6 GL). Wipe the floor with a well-wrung mop (previously soaked in the solution). Let the floor dry completely. After drying do not wipe with water. Wicanders floors must only be damp-mopped.

## (Stripping & Cleaning: Wicanders Power Strip)



Power Strip is a cleaning product for the removal of Power Polish, old wax layers, cleaning products, dirt which is difficult to remove, acrylate and other polymers.

**Product description:** Wicanders Power Strip is a pH-neutral stripper.

**Field of application:** Low foaming stripper for heavily soiled floors and to remove old floor care products Suitable for all Wicanders floors.

**Advantages:** pH-neutral and thus suitable for sensitive floors - low foaming.

**Sizes:** 1 L

**Application:** For stripping apply Wicanders® Power Strip diluted 1:10 to 1:20 according to the degree of soiling. Work over the floor in sections using a green pad and remove the dissolved dirt with clean water before it dries again.

**Coverage:** Approximately 100 m<sup>2</sup> (1000 sq.ft.), based on 1:20 dilution rate.

### Power Strip Instructions

Removal of maintenance products / thorough cleaning

The accumulation of several coats of maintenance products, or incorrect maintenance, may cause the floor to have an unpleasant look. When this occurs, it is necessary to remove all coats of maintenance products applied. For this purpose, use Power Strip for a thorough cleaning and proceed as follow:  
Dilute Power Strip in water (1:20). Put the solution in the buffing machine container/spray. Buff the floor using a Blue / brown Pad (Scotch-Brite - 3M). This will remove the maintenance products and dirt.

Work over the floor in sections by and absorb the dissolved dirt before it dries again. Do not allow the Power Strip solution to stand on the floor for more than 5 min.

After this operation it is necessary to clean the floor with a mop dampened in clean water. Allow it to dry. Now the floor must have a dull appearance.

Apply a new coat of Wicanders maintenance product - Power Polish. This will give back the floor its original beauty.

## (Periodic Maintenance: Power Polish)



Power Polish should be used for periodic maintenance of all Wicanders floors.

**Product description:** Wicanders Power Polish is a long term maintenance product for the care of Wicanders Floors.

**Field of application:** Wicanders floors with HPS; WRT; WPS; and PU Finished.

**Advantages:** protective layer - easy to apply

**Sizes:** 1 L

**Application:** By short hair mop/wax applicator (Ex. LOBATOOL).

**Coverage:** 3L will cover approximately 100 m<sup>2</sup> (1000 sq.ft.) depending on application rate.

### Power Polish Instructions

The application technique of Power Polish is the following:  
Make sure the floor is clean and dry (clean it with Wicanders® Soft Cleaner). A basic clean is recommended for Corkcomfort Floating WRT & HPS. Apply one coat of Power Polish evenly, using a soft mop application tool. 3L will cover approximately 100 m<sup>2</sup> (1000 sq.ft.).

Let the floor dry completely (about 30 minutes). Do not polish after using the maintenance products.

Clean all tools with water, immediately after use.

The frequency of maintenance depends on the traffic and on the floor visual aspect.